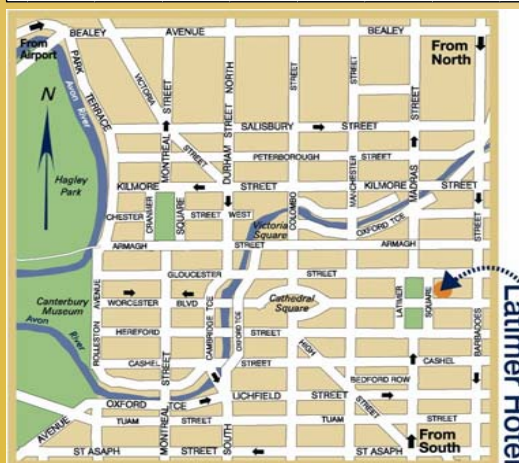


CONFERENCE ROOM CAPACITIES & SIZES

	CAPACITY					ROOM SIZE	
	THEATRE STYLE	CLASS ROOM	U-SHAPED CONFERENCE	COCKTAIL	DINING	Sq Mtr	HEIGHT (metres)
1st FLOOR (see reverse for Plans)							
Savoy	160	72		200	150	182	3.2
Savoy - North	80	32	25	100	70	96.2	3.2
Savoy - South	64	44	25	100	60	85.8	3.2
Clarendon	120	96	45	180	130	156.2	3.0
Windsor	40	24	18	30	30	42.0	3.0
GROUND FLOOR (see reverse for Plans)							
Worcester	50	24	20	50	50	62.4	2.8
Gloucester					50	57	2.8
The Lobby				80		40.5	2.8
PENTHOUSE BOARD ROOMS							
Executive		12				22.7	2.4M
East	28	12				34.5	2.4M
West		6				22.4	2.4M



WHERE ARE WE

In the heart of Christchurch City, situated a 2 minute walk from Cathedral Square and only 30 Minutes from Christchurch International Airport.

With on site Parking for 90 vehicles, it's so convenient to leave your car with us and enjoy the fun of the city -

Vintage Tram, Christchurch Cathedral, Christchurch Museum, Art Gallery, Arts Centre, Botanic Gardens, Punting on the Avon, Christchurch Casino, Christchurch Town Hall & Convention Centre, Aquarium and Visitor Information Centre.

There is something for everyone.

LATIMER HOTEL
CHRISTCHURCH · NEW ZEALAND

Perfect events start here

LATIMER HOTEL
CHRISTCHURCH · NEW ZEALAND



9 CONFERENCE VENUES

125 ACCOMMODATION ROOMS

90 CAR PARKS



www.latimerhotel.co.nz

30 Latimer Square, Christchurch 8011, New Zealand
Ph: +64 3 379 6760 DDI: +64 3 963 1384 Fax: +64 3 963 1390
events@latimerhotel.co.nz www.latimerhotel.co.nz

Few venues can offer extensive conference & banqueting facilities, combined with a variety of deluxe accommodation, restaurant & bar facilities, in one first class complex

So come to the Latimer and experience some of the finest hospitality New Zealand has to offer
~ WHERE PEOPLE MATTER MOST ~



A UNIQUE VENUE

At the Latimer we can offer something for everyone. From small intimate gatherings and meetings to larger conferences and corporate hospitality events, The Latimer Hotel & Conference Centre provides service and surrounding that are truly extraordinary.

Situated just off the heart of Cathedral Square in the Central City, overlooking a beautiful tree lined square that feels miles away from your hectic business schedule.

Whether it be for private dining, or a conference for up to 150 delegates, we can meet and exceed your needs. Our approach is both professional and flexible. Whatever your requirements, we will do our utmost to create an event to your specific needs.

Function and Meeting Rooms

We have 9 rooms which are designed to be adaptable to many different purposes. The schematics for all our rooms are on the following page, with details of capacities. The Penthouse Suites are located in the Main Hotel Building, with Panoramic views over Christchurch. All other rooms are based in the Main Conference Centre and have natural lighting and balconies so you may enjoy the sunshine during breaks. There is a venue here for everyone.

Equipment

We can provide all equipment you require for the perfect meeting or conference, including OHP, TV & video, slide projector, flipcharts, white boards, pens, paper, PA System.

What we do not have we can arrange to hire, so please ask.

Car Parking

We have space for 90 cars in our secure car parks.

CONFERENCES, DINING & EXHIBITIONS

Residential Conferences

At the Latimer we have 125 accommodation rooms with something to suit all delegates, from Studio Rooms to Two Bedroom Executive Apartments. Not only can you hold your conference here, you can stay and experience the superb hospitality the Latimer prides itself on. We can tailor a package to suit all your specific requirements.

Meetings and Day Conferences

You can book a meeting room at The Latimer for as long or as short a period as you wish. We are happy to provide a quote for any event.

Wining and Dining

We have designated private dining rooms, and function rooms with private bar facilities. Menus can be tailored to suit - from a lavish Banquet to a simple Cocktail Party. Just tell us what you require and our conference team will guide you in the right direction.

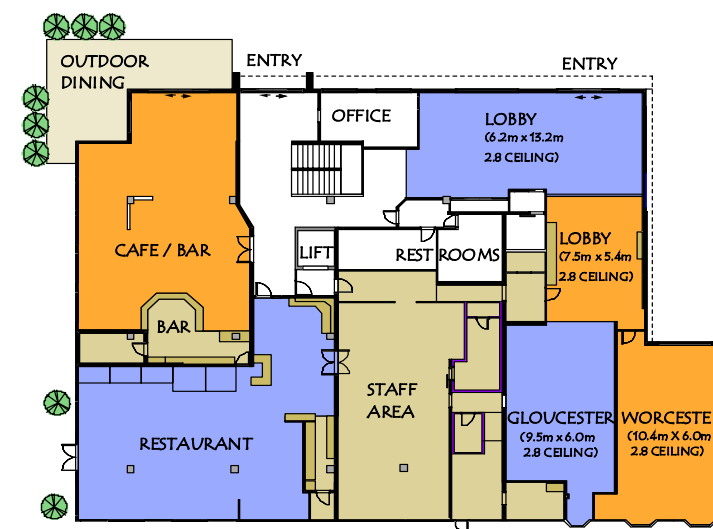
Groups and Tour Events

We can offer breakfast, lunch, afternoon tea or dinner for groups up to 130 in our spacious Function Rooms. If you are on a tight schedule or budget, you have no need to worry, we can create a menu, specially for you, served in the time scale you require. Or for that smaller occasion, The Latimer Restaurant offers an extensive menu with something for everyone.

Trade Displays and Exhibits

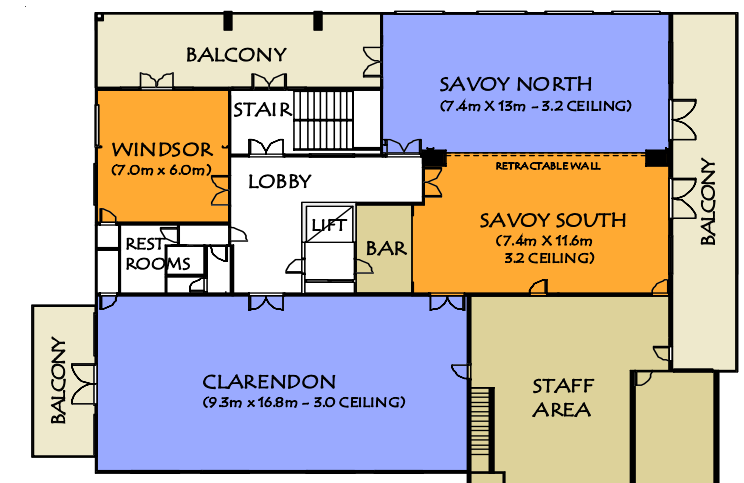
We can host exhibitions of most sizes in our range of meeting rooms. Our Conference team will ensure that all your needs are met.

GROUND FLOOR



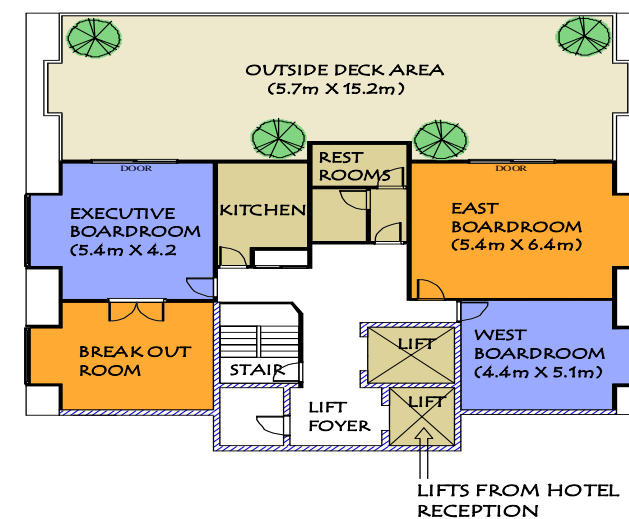
GROUND FLOOR FUNCTION CENTRE

FIRST FLOOR



FIRST FLOOR FUNCTION CENTRE

PENTHOUSE SUITES



PENTHOUSE BOARDROOMS - 6th FLOOR

- ♦ 230 Electrical Volt System & 3 Phase Power
- ♦ Fully Air Conditioned
- ♦ All Audio & Visual Equipment
- ♦ Video Conferencing Facility
- ♦ Lecterns
- ♦ Microphones
- ♦ Whiteboards & Flip Charts
- ♦ Full Business Centre Facilities
- ♦ Broadband Access

- ♦ Our Lobby is available for Product Launches and Trade Displays or Delegate Registration.
- ♦ On-site Workshop for Car & Machinery display.
- ♦ Arrangements can be made for Guest Speakers, Flowers Entertainment, Music, Sightseeing, Team Building, Transport .
- ♦ We can provide a full catering service: from Breakfasts to Conference Lunches, Banquet or Buffet Dinners, Morning and Afternoon Teas.
- ♦ A Full Beverage Service in each room.
- ♦ If you have any special requirements, please feel free to ask - If we can not help, we will find someone who can.